



[www.fineequipment.net](http://www.fineequipment.net)

*Raising Benchmarks of after sales support*

# ABOUT US

**Fine Equipments** is a well known name in the field of selling demolition and construction equipments. Fine is one of India's largest selling hydraulic rock breakers and has also established itself in other demolition and construction equipments. We are specialized in Rock Breakers, Quick Couplers, Grapple Series, Light Construction Machines, Power Trowel, Plate Compactor, Concrete Cutter, Crushing & Screening Equipments Piping Kit and other excavator attachments.

We provide all solution related to excavator attachment and construction equipments under the same roof. Our sales and service network covers entire India. It has carved a niche for itself as the highest value for money in the rock breaker and attachment market. We offer rock breakers and other equipments as per the choice and need of the hirers as well as contractors. It is a perfect blend of high power and low maintenance cost, high output and reliability, high profitability and optimum investment.

**Our aim** is customer satisfaction and **to raise benchmark of after sales support**. We have engaged many experts to gain maximum quality and better service. Fine products are designed and manufactured using advanced technologies. Fine has one of the largest installation base of rock-breakers in India and also growing world-wide. The advanced features and the modern technologies used in our products give us a unique identity. This is the reason why Fine products are always the first choice of the customers.

**We successfully** cater to the needs of our clients with international standard products at economical prices. We are committed to provide on-time delivery, flawlessly at client's site. Our business transactions are transparent and hassle free, enhancing the customer experience in the buying process. Empowered with well-defined infrastructure, our experience in handling bulk orders and meeting targets as per the given schedule help us in efficiently meeting customer's need.



**ACCUMULATOR**  
High-pressure surge dampener for protection of base carrier hydraulics.

**VALVE ADJUSTER**  
Controls the oil flow.

**UNDERWATER APPLICATION HOLE**  
Allows air connection for underwater usage of breaker.

**AUTO - GREASE HOLE**  
Allows easy connection of breaker mounted or external Auto Greasing kits.

**PISTON**  
Superior design, metallurgy and manufacturing render long life and trouble free service.

**VALVE**  
Controls the stroke direction of the piston. Internal valve for higher efficiency.

**TOOL**  
High quality compressed steel and correct heat treatment guarantee performance, economy and long life.

**BACK HEAD**  
Powers the breaker by stored gas. It is easy to charge and maintenance free.

**CYLINDER**  
Perfected clearances allow longest service life in tropical climates.

**THROUGH BOLT**  
Holds main body together. Latest design and metallurgy ensure long service life.

**FRONT HEAD**  
Carries Wear Bushes for correct tool alignment.



\* Some features are optional.

- Auto Greasing
- Underwater Application
- Low Noise Version

# ROCK BREAKER

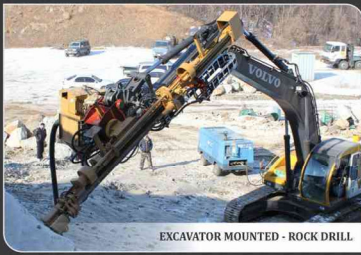


		FINE 3 X	FINE 5 X	FINE 6 X	FINE 10 X	FINE 12 X	FINE 21 X Plus	FINE 23 X Plus	FINE 37 X	FINE 46 X	FINE 50 X
Operating Weight	kg	144	350	405	870	920	1660	1760	2350	3314	4100
Overall Height (with bracket)	mm	1271	1586	1870	2338	2400	2500	2707	3100	3612	3726
Operating Pressure	bar	80 - 110	90 - 130	90 - 130	120 - 150	150 - 180	160 - 180	160 - 180	160 - 180	160-180	160 - 180
Required Oil Flow	lpm	20 - 30	30 - 50	45 - 90	80 - 110	90 - 120	140 - 160	150 - 180	180 - 220	190-250	250 - 310
Impact Rate	bpm	600 - 1000	450 - 900	400 - 800	450 - 800	400 - 900	350 - 600	350 - 550	300 - 500	300-500	250 - 450
Tool Diameter	mm	45	68	72	100	110	135	140	155	165	175
Suitable Base Machine	ton	1.3 - 2	4 - 8	5 - 8	9 - 14	10-14	16 - 22	18 - 28	30 - 38	40-49	50 - 65

Due to constant product upgradation specifications are subject to change without prior notice.



# OTHER PRODUCTS



EXCAVATOR MOUNTED - ROCK DRILL



SKID STEER LOADER



MINI EXCAVATOR



EXCAVATOR MOUNTED-BUCKET CRUSHER

## NETWORK



QUICK COUPLER



BUCKET



www.fineequipment.net  
NETWORK INDIA

## FINE EQUIPMENTS (INDIA) PVT. LTD.

FINE Centre, Behind Shroff's Srushti,  
Off Mumbai - Bangalore Highway,  
Mhalunge, Pune 411 045. INDIA.

Tel: +91 20 6400 3008/9  
Cell: +91 93705 44931 / 93718 78554  
Email: info@fineequipment.net

AHMEDABAD: 7030453838/ 9370544931 | AURANGABAD: TRIMURTI EQUIPMENTS: (0240) 245 2098 / 98220 87941 | BARSHI: 93705 44931 | BENGALURU: 99002 46880 / 9370544931 | BHUBANESHWAR: 8763479927 / 9371878554 | CHENNAI: VULCAN CONSTRUCTION & MINING EQUIPMENTS: 9840860857/ 9371878554 | CHHATISGARH: HEMANG ENTERPRISES: 9827142058/9372298765 | DELHI: 7767002564/9372298756 | ERNAKULAM: 94484 76211 / 94484 30473/9900246880 | HYDERABAD: SRI SAI INFRA EQUIPMENT: 9849743855/89858 33133, /9371878554 | INDORE: E S INFRASERVE PVT. LTD: (0731) 2577781 / 9329731231/9372298765 | JAIPUR: 92143 08200/9370544931 | JAMMU & KASHMIR: 7767002563/9372298765 | JHARKHAND: 9371878554 | JODHPUR: SUNCITY EQUIPMENTS- 94611 90200 / 92143 08200 | KOLHAPUR: 9370544931/ 88888 62669 | KOLKATA: 9371878554 / 9874788572 | KOTA: SHARMA HEAVY MACHINERY: 8559900608, 92143 08200 | MUMBAI: FINE BRANCH: 88060 42241 / 8007925588 | Mandi (HP) : GANPATI EQUIPMENTS - 9805659592 / 9372298765 | NAGPUR: 9370544931 | NASHIK: 93705 44931/9370538634 | RATNAGIRI: 93705 44931 / 9422630969 | ROURKELA: 87634 79927/ 93718 78554 | SAMBALPUR: EQUIPZONE: 9937511112/ 8763479927/ 9371878554 | SILIGURI: EQUIPARTS INDIA: 9831299245 / 9874788572 / 9371878554 | SURAT: 7030453838/9370544931 | UDAIPUR: ADVANCE SERVICES: 9929843612 /9214308200 | UTTAR PRADESH: SHREE LAXMI PAVES & TILES INDUSTRIES: 99352 83340 / 9372298765 | UTTRAKHAND: 7767002563/9372298765 | VIJAYAWADA: 8985833133/9371878554 | VISAKHAPATNAM: SRI SAI INFRA EQUIPMENT: 9849743855 / 89858 33133 / 9371878554