

▶ MTX60ER

# Trench Rammers

Outstanding compaction ability and balance.



- ▶ 4 STROKE SUBARU ENGINE
- ▶ THROTTLE LEVER  
- ON/OFF/FUEL STOP
- ▶ 3 STAGE AIR CLEANER SYSTEM
- ▶ VAS ANTI-VIBRATION SYSTEM
- ▶ 3-LITRE FUEL TANK
- ▶ 1-PIECE WOODEN/STEEL FOOT
- ▶ EASY LOAD HANDLE ROLLER
- ▶ HEAVY DUTY RIBBED BELLOWS

# ▶ MTX60ER Trench Rammers

## FEATURES:

4 stroke Subaru engine  
Throttle lever -On/Off/Fuel Stop  
3 stage air cleaner system  
VAS anti-vibration system  
Large 3-litre fuel tank  
1-piece wooden foot c/w steel base  
Easy load handle roller  
Heavy duty ribbled bellows

## SPECIFICATIONS:

MODEL	WEIGHT	PLATE (mm)	IMPACT FORCE
MTX-60ER	64KG	340 X 265	13.6kN
JUMPING STROKE	ENGINE	PETROL	
50 - 80mm	SUBARU 4-Stroke	SUBARU ER12D 3.5 Hp	



THROTTLE LEVER



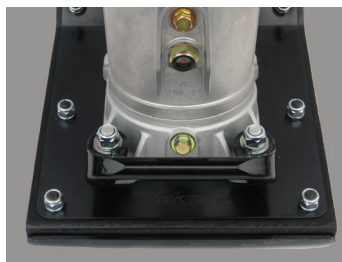
AIR CLEANER SYSTEM



VAS ANTI-VIBRATION SYSTEM



3-LITRE FUEL TANK



1-PIECE WOODEN/STEEL FOOT



EASY LOAD HANDLE ROLLER



HEAVY DUTY BELLOWS

## PRODUCT RANGE:



MTR40F



MVCF60RVAS



MVH306DSNC

## PARTS SERVICE:

We are proud of the back-up service we offer to customers. The importance of stocking genuine spare parts for all the equipment we supply is a high company priority.

**AUCKLAND HEAD OFFICE**  
6-10 Parkway Drive,  
Mairangi Bay, Auckland  
Phone: (+64) 09 443 2436  
Fax: (+64) 09 443 2435  
Email: sales@yrco.co.nz

**SOUTH ISLAND OFFICE**  
20 Nga Mahi Road,  
Sockburn, Christchurch  
Phone: (+64) 03 341 6923  
Fax: (+64) 03 341 6955  
Email: gregl@yrco.co.nz

  
PROUD TO BE 100%  
NEW ZEALAND  
OWNED & OPERATED



**SUBARU**

Industrial Power Products

**YR**®  
**YOUNG/MAN  
RICHARDSON  
& CO. LTD.**