

ATHENA

CRAWLER SELF-LEVELLING SCISSOR LIFT



850-BL
870-BL
1090-BL

850-HE

1090 PRiMO



ALMACRAWLER 

ATHENA 850-HE 850-BL 870-BL 1090-BL

8m

WORKING
HEIGHT

850-HE



MOVE LEVEL WORK

The innovative self-propelled tracked scissor lift with a patented self-levelling technology, the ATHENA BL Line overcomes standard limits of traditional equipment.

With working heights from 8m to 10m, load capacity of 250kg to 300kg and the bi-levelling technology for up to 20° inclination, the ATHENA BL Line was designed for safety and productivity on the jobsite!

8m
working height

6m
travel height



ATHENA
870-BL



ATHENA
1090-BL

10m

working height

6.5m

travel height

DYNAMIC LEVELLING



PROACTIVE LEVELLING



PATENTED TECHNOLOGY

ATHENA 1090 PRIMO

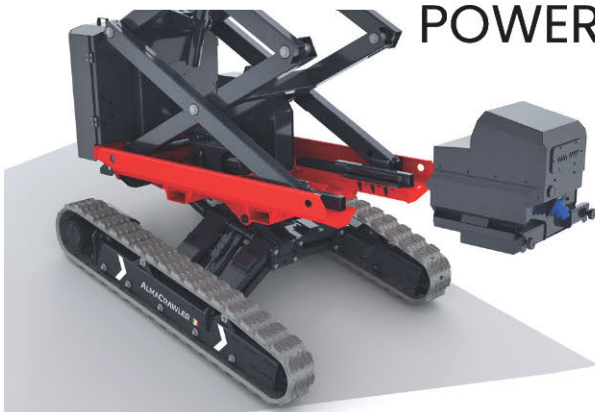
MOVE
LEVEL
WORK

FULLY
GREEN

- Full electric
- Electric drive
- Removable Power Pack
- Easy maintenance thanks to new design
- Anti-Entrapment System
- Automatic Tensioner System



REMOVABLE
POWER PACK



FORKLIFT POCKETS

DYNAMIC LEVELLING

Autonomous self-levelling function when the basket is fully lowered.

No operator intervention necessary.

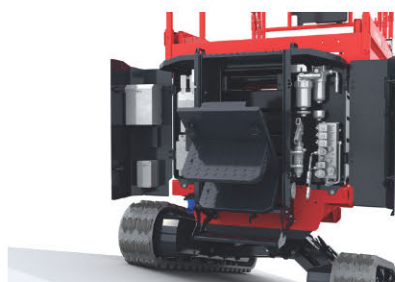
PROACTIVE LEVELLING

Self-levelling function when the basket is at height up to 6.5m working height.

ANTI-ENTRAPMENT
SYSTEM



EASY
MAINTENANCE

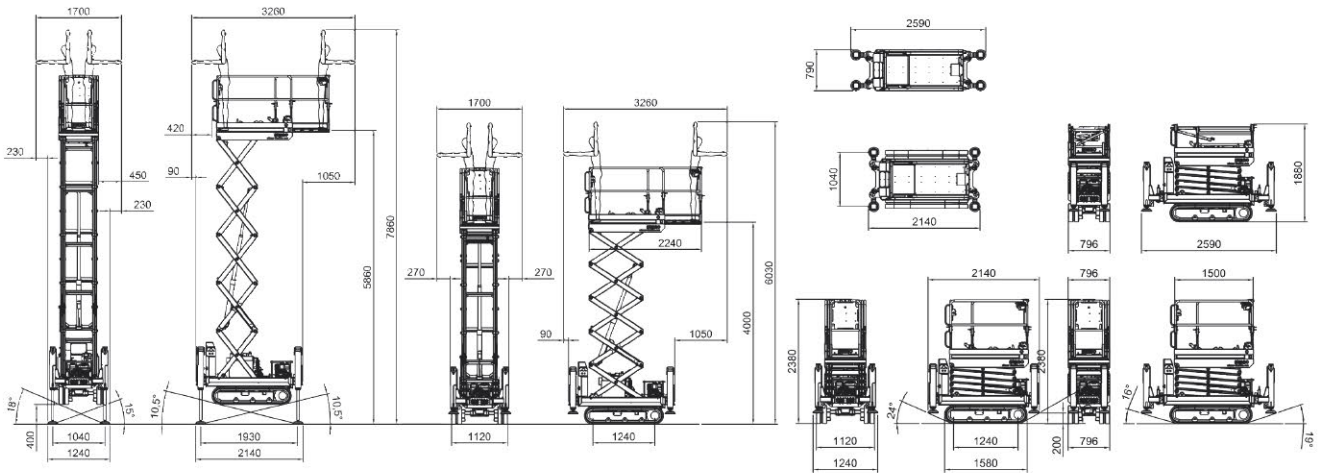


Technical data	850-HE	850-BL	870-BL	1090-BL	1090 PRiMO
Basket capacity	250 kg (2 op.)	250 kg (2 op.)	250 kg (2 op.)	300 kg (2 op.)	300 kg (2 op.)
Basket size	1.50 x 0.78 m	1.50 x 0.78 m	1.50 x 1.20 m	1.80 x 1.30 m	1.80 x 1.30 m
Max working height	7.9 m	7.9 m	7.9 m	10.0 m	10.0 m
Max height basket floor	5.8 m	5.9 m	5.9 m	8.0 m	8.0 m
Moving height	4.0 m	6.0 m	6.0 m	6.5 m	6.5 m
Accelerator	Automatic	Automatic	Automatic	Automatic	Automatic
Undercarriage	Retractable	Bi-Levelling	Bi-Levelling	Bi-Levelling	Bi-Levelling
Basket levelling	Automatic	Automatic	Automatic	Automatic	Automatic
Longitudinal levelling Front	10.5°	+/- 16°	+/- 16°	+/- 15°	+/- 15°
Longitudinal levelling Rear	10.5°	+/- 20°	+/- 20°	+/- 20°	+/- 20°
Lateral levelling	18°	+/- 15°	+/- 15°	+/- 14°	+/- 14°
Electric pump (option)	220V-2,2kW	220V-2,2kW	220V-2,2kW	220V-2,2kW	220V-2,2kW
Direction-Control System	Yes	Yes	Yes	Yes	Yes
Easy-Drive System	Yes	Yes	Yes	Yes	Yes
Max speed	max 2.20 km/h	max 2.20 km/h	max 2.20 km/h	max 2.40 km/h	max 4.50 km/h
Ground emergency	Yes	Yes	Yes	Yes	Yes
Control of inclination	Automatic	Automatic	Automatic	Automatic	Automatic
Gradeability	25°	25°	25°	25°	25°
Side slope	21°	21°	21°	21°	21°
Length	2.14 m	1.94 m	1.94 m	2.28 m	2.35 m
Width	1.24 m	1.30 ÷ 1.50 m	1.30 ÷ 1.50 m	1.46 ÷ 1.64 m	1.46 ÷ 1.64 m
Min height with narrow tracks (folded railings)	-	2.28 (1,98) m	2.28 (1,98) m	2.42 (2,08) m	2.42 (2,09) m
Min height with wide tracks (folded railings)	-	1.98 (1,68) m	1.98 (1,68) m	2.09 (1,75) m	2.09 (1,75) m
Compliance	EN 280, ANSI, CSA, AS/NZS	EN 280, ANSI, CSA, AS/NZS	EN 280, ANSI, CSA, AS/NZS	EN 280, ANSI, CSA, AS/NZS	EN 280, ANSI, CSA, AS/NZS

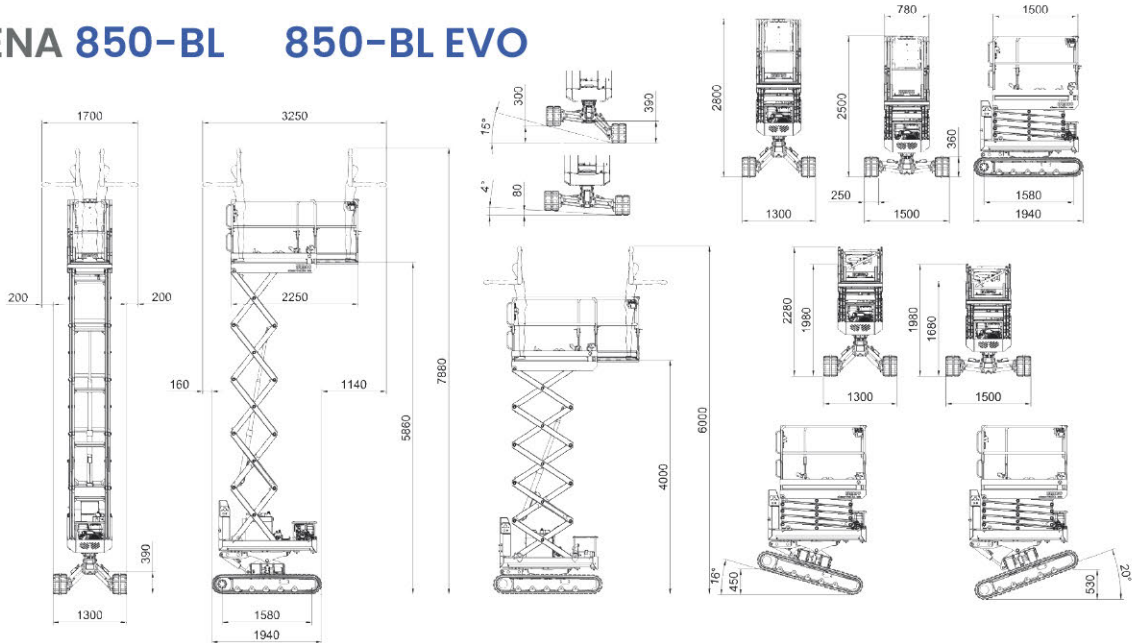
Version

HE	Gasoline Honda iGX390	-	-	-	-
	1790 kg / 1840 kg	-	-	-	-
BL	-	Gasoline Honda iGX390 Diesel YANMAR 2TNV70-ASA 13.8 HP	Gasoline Honda iGX390 Diesel Hatz 1B40	-	-
	-	2070 kg / 2090 kg	2500 kg / 2530 kg	-	-
EVO	-	Diesel Kubota Z482	Diesel Kubota Z482	Diesel Kubota Z602	-
	PROACTIVE LEVELLING DYNAMIC LEVELLING	2450 kg	2450 kg	2890 kg	-
EVO BI-ENERGY	-	-	Diesel Kubota Z482 LTH Power Pack 100Ah-48V	Diesel Kubota Z602 LTH Power Pack 100Ah-48V	-
	PROACTIVE LEVELLING DYNAMIC LEVELLING	-	2520 kg	2960 kg	-
PRiMO FULL ELECTRIC ELECTRIC DRIVE	-	-	-	-	N°2 electric motor Total Power 10.6 kW
	PROACTIVE LEVELLING DYNAMIC LEVELLING	-	-	-	Lead Crystal 180Ah - 48V Lithium 210Ah - 48V 3050 kg / 2880 kg

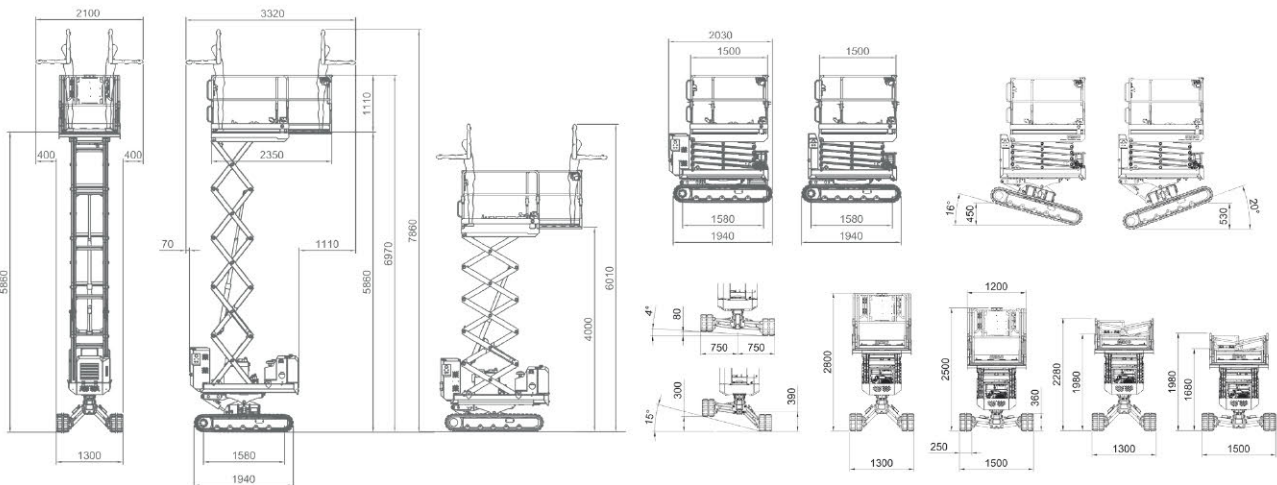
ATHENA 850-HE



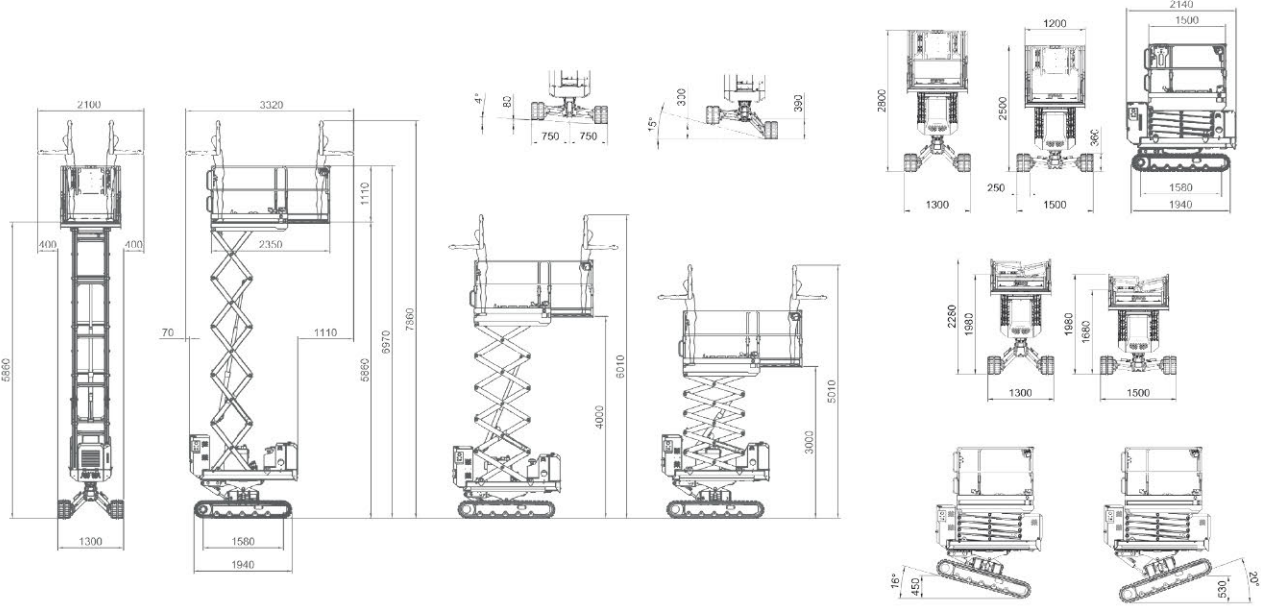
ATHENA 850-BL 850-BL EVO



ATHENA 870-BL

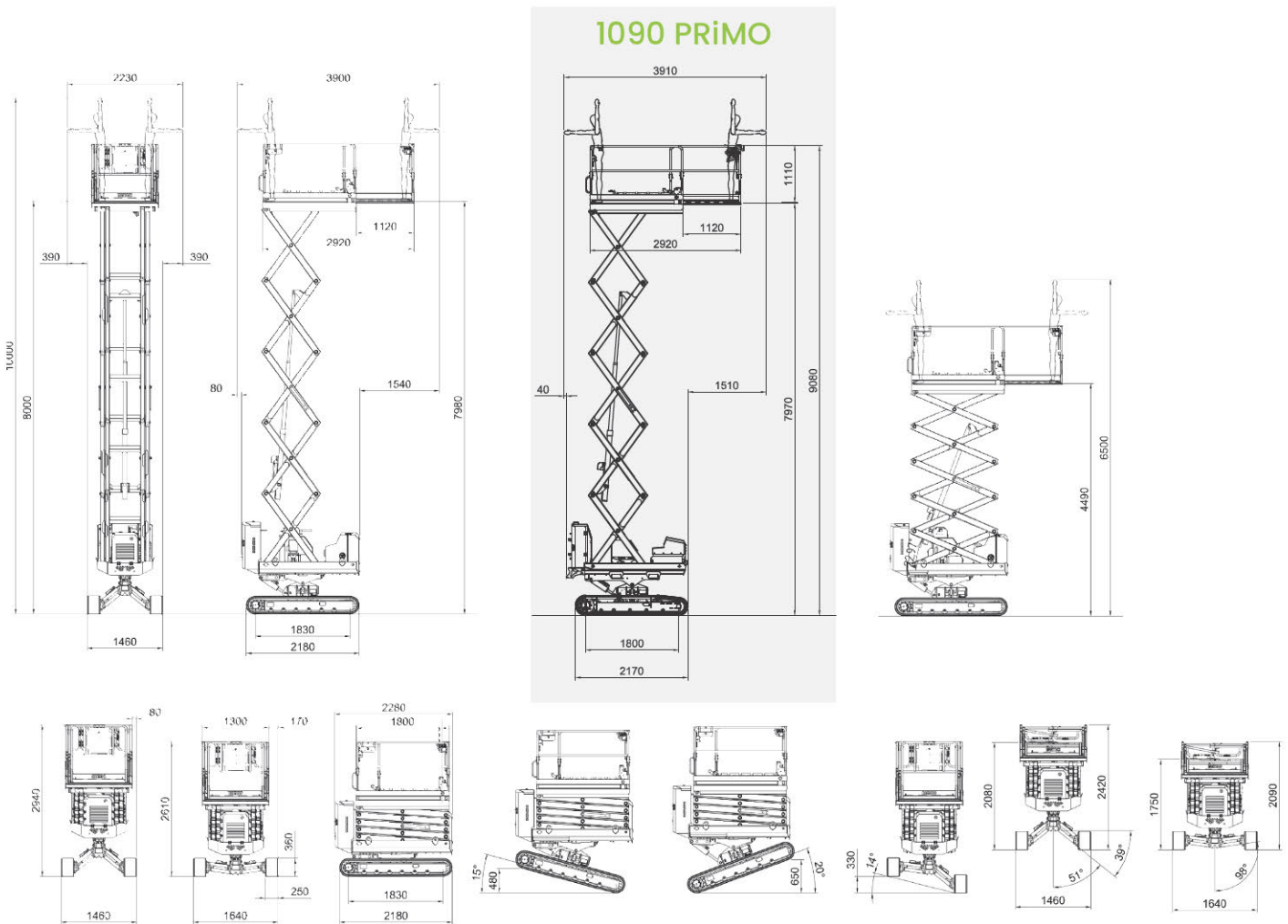


ATHENA 870-BL EVO 870-BL EVO BI-ENERGY



ATHENA 1090-BL 1090 PRiMO

1090-BL EVO 1090-BL EVO BI-ENERGY



Almac Pacific
Level 10, 68 Pitt Street, Sydney, NSW2000

info@almac-pacific.com.au
www.almac-pacific.com.au